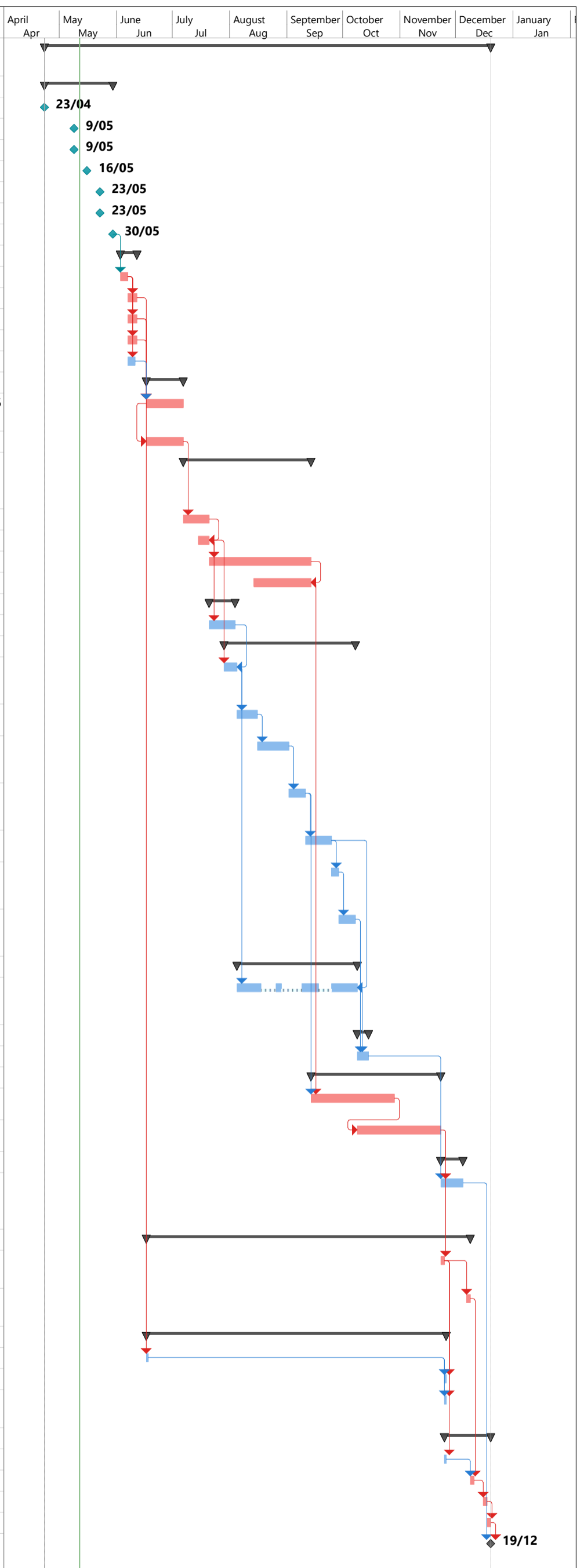


ID	Task Name	Duration	Start	Finish	Predecessors	April	May	June	July	August	September	October	November	December	January
						Apr	May	June	July	August	September	October	November	December	Jan
1	Gulf Developmental Road 92C ROSI Package 4 Stage 1 CN22813	156 days	Wed 23/04/25	Fri 19/12/25											
2	Preliminaries	26 days	Wed 23/04/25	Fri 30/05/25											
3	Letter of Acceptance	0 days	Wed 23/04/25	Wed 23/04/25											
4	TPAS submission of compliance plan	0 days	Fri 9/05/25	Fri 9/05/25											
5	Updated construction program	0 days	Fri 9/05/25	Fri 9/05/25											
6	Contract management plans	0 days	Fri 16/05/25	Fri 16/05/25											
7	Install project sign	0 days	Fri 23/05/25	Fri 23/05/25											
8	Install project banner	0 days	Fri 23/05/25	Fri 23/05/25											
9	Possession of Site	0 days	Fri 30/05/25	Fri 30/05/25											
10	Site Establishment	9 days	Tue 3/06/25	Wed 11/06/25											
11	Set-up - Offices & Camp	4 days	Tue 3/06/25	Fri 6/06/25	9										
12	Mobilisation of Key Plant and Personnel	5 days	Sat 7/06/25	Wed 11/06/25	11										
13	Set-up Site Traffic Controls	5 days	Sat 7/06/25	Wed 11/06/25	11										
14	Set-up Erosion and Sediment Controls	5 days	Sat 7/06/25	Wed 11/06/25	11										
15	Survey Setout	4 days	Sat 7/06/25	Tue 10/06/25	11										
16	Side Track	15 days	Tue 17/06/25	Sun 6/07/25											
17	Cultural Heritage Review, Approval and Monitoring	15 days	Tue 17/06/25	Sun 6/07/25	12,13,14,15										
18	Construct Sidetrack x 3	15 days	Tue 17/06/25	Sun 6/07/25	17SS										
19	Earthworks (Topsoil Stripping/Cut/Fill/Ground Surface Treatment)	44 days	Mon 7/07/25	Sat 13/09/25											
20	Clear and Grub	9 days	Mon 7/07/25	Sun 20/07/25	18										
21	Ground Surface Treatment	6 days	Tue 15/07/25	Sun 20/07/25	20FF										
22	Excavation	35 days	Mon 21/07/25	Sat 13/09/25	21										
23	Embankment	21 days	Thu 14/08/25	Sat 13/09/25	22FF										
24	Drainage Removal/Demolition	9 days	Mon 21/07/25	Sun 3/08/25											
25	Demolish Existing Structures	9 days	Mon 21/07/25	Sun 3/08/25	21										
26	Supply and installation of culverts	46 days	Tue 29/07/25	Tue 7/10/25											
27	Supply and installation of steel-reinforced concrete pipe culvert components, Class [3], [2/1500] mm	7 days	Tue 29/07/25	Mon 4/08/25	21FS+3 days,25FF										
28	Installation of concrete pipe culvert components, [1/900] mm diameter [1D]	6 days	Tue 5/08/25	Fri 15/08/25	27										
29	Supply and installation of concrete box culvert components, [2/2100x2100] [2B] Including Link Slabs	12 days	Sat 16/08/25	Mon 1/09/25	28										
30	Installation of concrete pipe culvert components, [1/600] mm diameter [3B] Including Precast Headwalls	4 days	Tue 2/09/25	Wed 10/09/25	29										
31	Supply and installation of concrete box culvert components, [5/1800x1800] [3D]	9 days	Thu 11/09/25	Wed 24/09/25	30										
32	Installation of concrete pipe culvert components, [1/600] mm diameter [4B] Including Precast Headwalls	4 days	Thu 25/09/25	Sun 28/09/25	31										
33	Installation of concrete pipe culvert components, [1/600] mm diameter [4D] Including Precast Headwalls	4 days	Mon 29/09/25	Tue 7/10/25	32										
34	Concrete in Culverts and End Structures	40 days	Tue 5/08/25	Wed 8/10/25											
35	End structures to culverts, reinforced concrete [including headwall and wingwalls] [1B, 1D, 2B, 3D]	29 days	Tue 5/08/25	Wed 8/10/25	27,31FF+7 days										
36	Protective Treatments	6 days	Thu 9/10/25	Tue 14/10/25											
37	Rock protection	6 days	Thu 9/10/25	Tue 14/10/25	35,33										
38	Unbound Pavements	45 days	Sun 14/09/25	Sat 22/11/25											
39	Subtype 2.3, Unbound pavement, [Subbase Layer/200mm]	30 days	Sun 14/09/25	Tue 28/10/25	30,23										
40	Subtype 2.1, Unbound pavement, [Base Layer/175mm]	30 days	Thu 9/10/25	Sat 22/11/25	39FS-15 days										
41	Landscape and Revegetation	7 days	Sun 23/11/25	Thu 4/12/25											
42	Installation of hydromulch - bonded fibre matrix [Vital Bon or approved alternative product]	7 days	Sun 23/11/25	Thu 4/12/25	40,37										
43	Sprayed Bituminous Surfacing	115 days	Tue 17/06/25	Mon 8/12/25											
44	First Visit Primerseal, grade [AMC7], spray rate [1.6 l/m2]	2 days	Sun 23/11/25	Mon 24/11/25	40										
45	Visit 2 - 2nd Coat PMB S35E- 10mm Final Seal	2 days	Sun 7/12/25	Mon 8/12/25	44FS+7 days										
46	Roadside Furniture	107 days	Tue 17/06/25	Tue 25/11/25											
47	Demolition of road furniture	1 day	Tue 17/06/25	Tue 17/06/25	13										
48	Guide Posts	1 day	Tue 25/11/25	Tue 25/11/25	44,47										
49	Supply and Installation of regulatory, warning and hazard signs	1 day	Tue 25/11/25	Tue 25/11/25	44,47										
50	Line Marking	15 days	Tue 25/11/25	Fri 19/12/25											
51	Spotting only for longitudinal lines	1 day	Tue 25/11/25	Tue 25/11/25	44										
52	Line Marking	2 days	Tue 9/12/25	Wed 10/12/25	45,51										
53	Audio Tactile	2 days	Tue 16/12/25	Wed 17/12/25	52										
54	Raised Pavement Markers	2 days	Thu 18/12/25	Fri 19/12/25	53										
55	Date of Practical Completion	0 days	Fri 19/12/25	Fri 19/12/25	54,42										



Project: Project 9-5 Template 20
Date: Mon 12/05/25

Task		Inactive Milestone		Start-only		Critical Split	
Split		Inactive Summary		Finish-only		Progress	
Milestone		Manual Task		External Tasks		Manual Progress	
Summary		Duration-only		External Milestone			
Project Summary		Manual Summary Rollup		Deadline			
Inactive Task		Manual Summary		Critical			